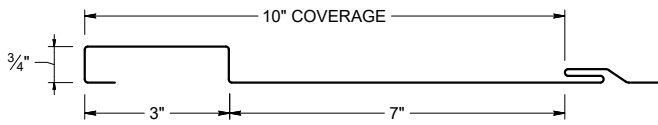
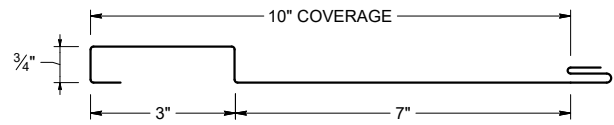


SCREW FLANGE ATTACHMENT



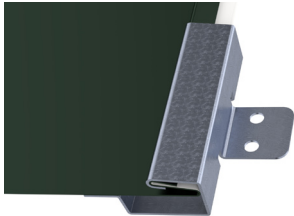
Screw Flange panels in this profile require additional material (drop/waste) and must be slit to a custom size. Inquire for custom pricing and availability.

CLIP ATTACHMENT

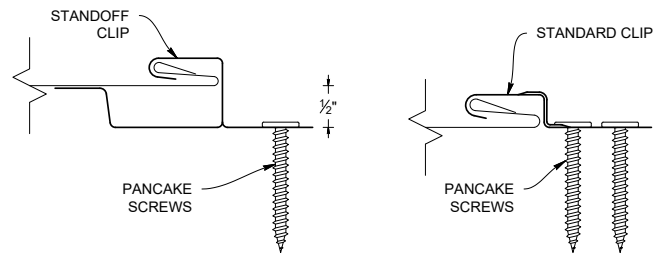
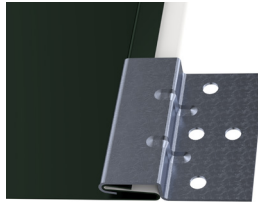


PANEL ATTACHMENT CLIP

STANDOFF CLIP



STANDARD CLIP



KEY FEATURES

- 10" panel coverage
- 24 and 22 Tru-Gauge™, and .032" and .040 Aluminum (limited colors). Screw Flange and Clip attachment available
- Custom 20 & 18 Tru-Gauge™ and .050" and .063" Aluminum. These require the use of high performance clip. (please inquire)
- 16 and 20 oz. Copper
- Rusteel Plus™ (A606)
- 3/4" deep panel
- 2' to 20'10" panel lengths
- Custom profiles available
- Vertical or Horizontal Wall Application (Rain Screen)
- Acceptable for use as a soffit panel
- Interchangeable panel widths and configurations

TESTING

- ASTM E331 - Water infiltration (wall)
- ASTM E283 - Air infiltration (wall)
- ASTM E1680 - Air infiltration (roof)
- ASTM E1646 - Water infiltration (roof)
- ASTM A653/A924 - G90 Galvanized
- ASTM A792 - Zincalume/Galvalume AZ-50/55
- ASTM B209 - Aluminum Substrate

ASTM E 1680/E283 Air Penetration	ASTM E 1646/E331 Water Penetration
12 PSF<0.01 CFM/ft²-PASS	20.5 PSF - Pass
Intertek Test Result L5460.01-901-44 R1	
Intertek Test Result L5461.01-901-44 R1	

WEIGHT CHART

ELV37	WIDTH	24 GA STEEL	22 GA STEEL	.032 ALUM	.040 ALUM
THICKNESS		0.0236"	0.0285"	0.032"	0.040"
WEIGHT/LINFT	CLIP ATTACH	1.163 LBS	1.34 LBS	0.55 LBS	0.66 LBS
WEIGHT/LSQFT	CLIP ATTACH	1.40 LBS	1.613 LBS	0.66 LBS	0.79 LBS
WEIGHT/LINFT	SCREW FLANGE	1.309 LBS	1.702 LBS	0.62 LBS	0.835 LBS
WEIGHT/LSQFT	SCREW FLANGE	1.57 LBS	2.042 LBS	0.74 LBS	1.00 LBS